

BROWN SWISS

🇬🇧 2024



EVOLUTION
Iberica

evolution@evolutioniberica.es
980 63 40 88

OUR MISSION

To contribute to feeding the global population by developing responsible solutions to breed climate-friendly, efficient and trouble-free cattle.

OUR VISION

A diverse and reliable genetic cooperative providing value by creating products and solutions, fulfilling a wide range of needs for sustainable cattle farming until 2030.

OUR VALUES

We are at the forefront of breeding advances, always finding new ways of supporting our customers. You can rely on our promises. We have big, audacious goals and we are dedicated to reaching them step by step. We do things right and only what creates value. Our hierarchies are low and our approach is proactive.

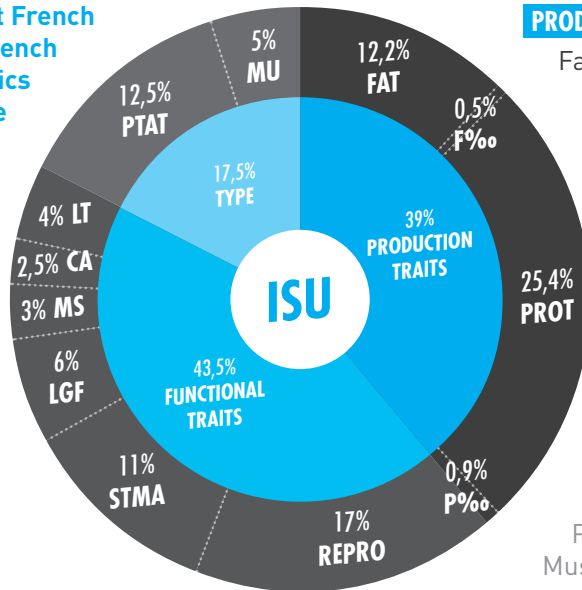


TABLE OF CONTENTS

TORNERO P	5	SATURNE	31
TIRAMISU	6	PARMESAN	32
TERRAZ	7	RULLY	33
TOUAREG	8	THOR	34
THALASSA	9	OSBOURNE	35
URION P	10	RIDLEY	36
ULTRATOP	11	O MALLEY	37
TITANIUM	12		
MAESTRO GP	13		
TORONTO	14		
SNOOPY	15		
SKYFALL	16		
TABEO	17		
ROQUEFORT	18		
TALICO P	19		
NO DECIBEL	20		
SAPHIR	21		
RASTAROKET	22		
SUPERBOY	23		
NICE GP	24		
OPTIMAL	25		
LBB RALICE	26		
OPENBAR	27		
PACTOLE	28		
TRIPOLI	29		
SUPERBOY	30		

A PRIMER ON THE BROWN SWISS PROOFS

The ISU is the total merit French index. It is calculated by the French national institute for agronomics research (INRA). It combines the production traits (39%), the functional traits (43,5%), and a combination of morphological traits (17,5%).



PRODUCTION TRAITS

Fat (FAT) 12,2%
 Fat Content (F%oo) 0,5%
 Protein (PROT) 25,4%
 Protein Content (P%oo) 0,9%

FUNCTIONAL TRAITS

Reproduction (REPRO) 17%
 Udder health (STMA) 11%
 Longevity (LGF) 6%
 Milking Speed (MS) 3%
 Calving Abilities (CA) 2,5%
 Teat length (LT) 4%

TYPE

PTA Type (PTAT) 12,5%
 Muscularity (MU) 5%

PRODUCTION TRAIT PROOFS — THE BREAKDOWN

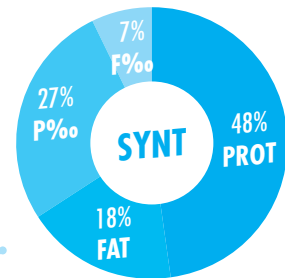
The traits rolled into this index are:

- quantity of protein (in kg)
- quantity of fat (in kg)
- quantity of milk produced (in kg)
- milk protein content in g/kg
- milk fat content in g/kg
- milk composite : $SYNT = 0,86 (PROT + 0,37 FAT + 0,15 F\%oo + 0,57 P\%oo)$

Milk protein* :

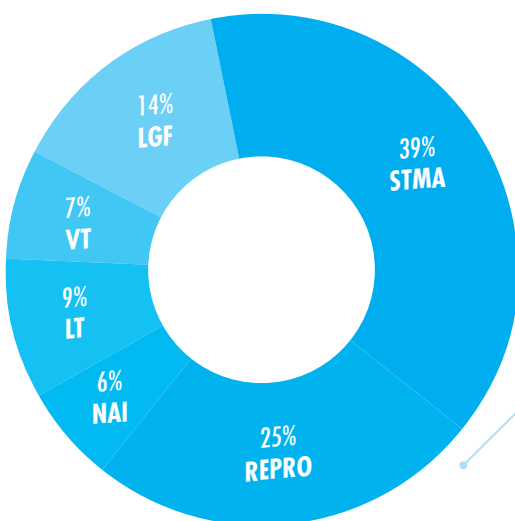
Kappa-casein (Kcas) - cheese-making quality
 AA Undesirable — AB Mid-range — BB Desirable

Béta-casein (Bcas) - Assimilation of milk
 A1A1 Peu désirable — A1A2 Intermédiaire — A2A2 Désirable



* Indicative basis expecting an official certificate (reliability > 99%)

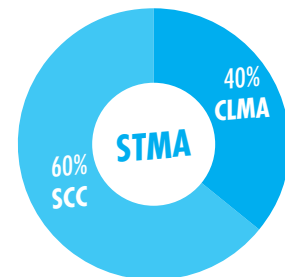
FUNCTIONAL TRAIT PROOFS - THE BREAKDOWN



Udder Health composite (STMA) :

Somatic cell count (SCC) 60%
 High — Mid-range — Low

Clinical mastitis (CLMA) 40%
 Common — Happens — Rare

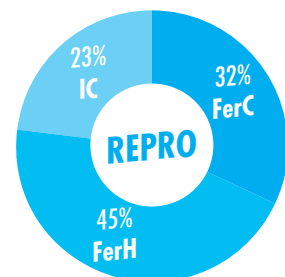


Reproduction Composite (REPRO) :

Fertility - Cows (FerC) 32%
 Poor — Normal — Good

Fertility - Heifers (FerH) 45%
 Poor — Normal — Good

Calving Interval - 1st AI (IC) 23%
 Long — Average — Short



Additional functional traits :

Milking Speed (MS)

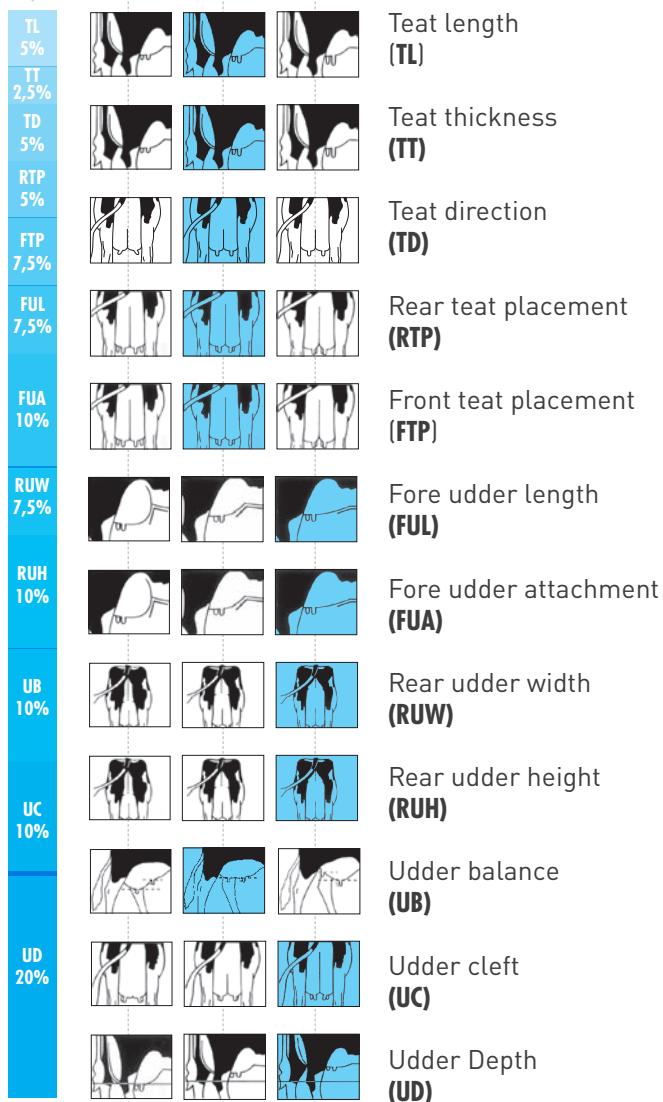
Slow — Normal — Fast

Calving Abilities (CA)

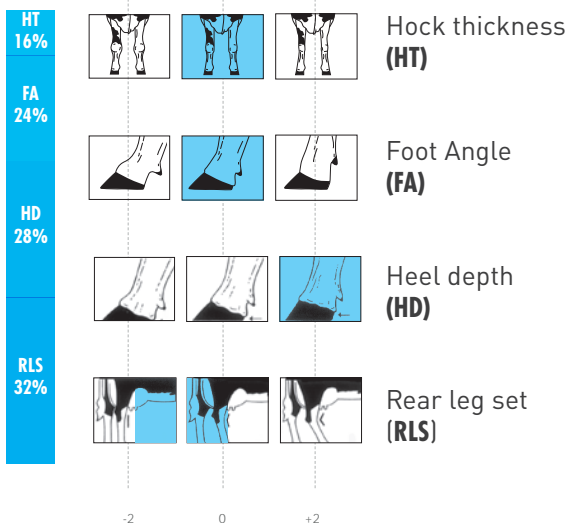
Hard — Normal — Easy

TYPE TRAIT INDEXES — THE BREAKDOWN

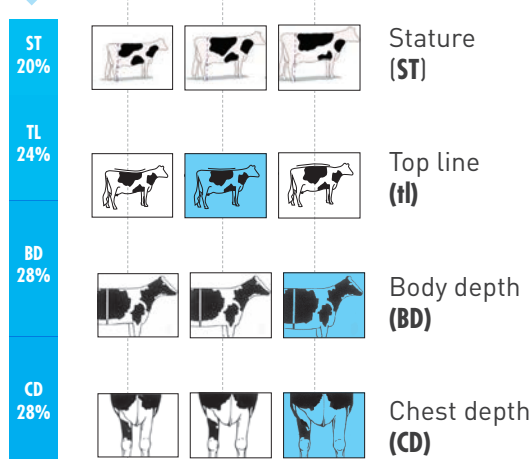
udder composite



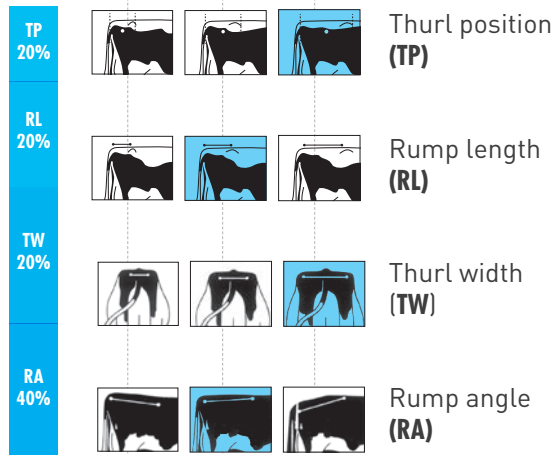
feet & legs composite



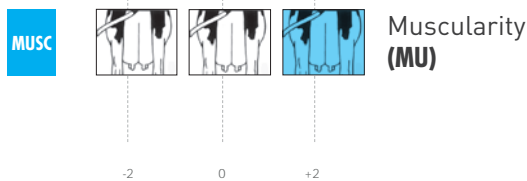
frame composite



rump composite



Muscularity



Blue flag = what you are aiming for

TYPE = 40% UD + 25% FR + 10% RU + 25% F&L

Tornero P

FR 2141523856
French Reg. No. A1883

Brown Swiss

05 01/11/2022

GAEC de Charmon - OBTRÉE (21)



^ ROLEASING (Dam)

Sire: **RAMSES** (ANTONOV)
Dam: **ROLEASING**

MGS: **VISOR** (VIPER)
MGD: **3289OLEASI**

MGGs: **VERSUS**
MGGD: **2974LEASIN**

PPR 222

Progressive Performance Ranking

NM\$ 628

Net Merit (\$)

K-Cn **BB** | B-Cn **A2A2** | aAa **216354**

PRODUCTION

0 Dtrs / 0 Herds / 55% Rel.

Milk	983 lbs
Fat	56 lbs
% Fat	0.07 %
Protein	45 lbs
% Protein	0.05 %
Net Merit (\$)	628
Fluid Merit (\$)	549
Cheese Merit (\$)	640
Grazing Merit (\$)	698

HEALTH AND REPRODUCTION

Gestation Length	0
Somatic Cell Score	2.81
Fertility Index	3.9
Productive Life	3.6
Daughter Calving Ease	2.8 %
Sire Calving Ease	3.3 %
Daughter Pregnancy Rate	4.9
Heifer Conception Rate	1.4
Cow Conception Rate	2.6
Livability	2.5
EFI	5.6 %
gEFI	5.5 %

TYPE TRAITS

0 Dtrs / 0 Herds / 55% Rel.

PTAT Total Conformation Index	-0.2	
Udder Composite	-0.24	
Mobility	0.0	
Foot & Leg Composite	0.5	
Stature	0.8	
Strength	0.3	
Body Depth	0.3	
Dairy Form	-0.6	
Rump Angle	0.6	
Thurl Width	0.4	
Rear Legs - Side View	-0.2	
Rear Legs - Rear View	0.0	
Foot Angle	0.4	
Fore Udder Attachment	0.0	
Rear Udder Height	-0.3	
Rear Udder Width	-0.8	
Udder Cleft	0.5	
Udder Depth	0.0	
Fore Teat Placement	-0.7	
Teat Length	1.4	

Reference : 04/2024

Tiramisu

FR 4953695985
French Reg. No. A1886

Brown Swiss

27/09/2022



^ RIGOLOTE (Dam)

Sire: **ROCKY** (CANYON CAD)
Dam: **RIGOLOTE**

MGS: **ORIGAN** (FIREWALL)
MGD: **NAPLES**

MGGS: **FACT**
MGGD: **JORDANIE**



TIRAMISU ^

GZW 128

Total Merit Index

ÖZW 120

Organic TMI

K-Cn **BB** | B-Cn **A2A2** | aAa **516342**

PRODUCTION

Rel. 76%

MW Milk Index	121	Butterfat %	-0.17%
Milk	972 kg	Protein	31 kg
Butterfat	26 kg	Protein %	-0.05%

FITNESS

Rel. 67%

Fitness	108	Udder Health	106
Longevity	103	Somatic Cell Count	103
Persistency	102	Claw Health Index	106
Prod. Increase	105	Milking Speed	104
Fertility Index	109	Milking Behaviour	94
Calving Ease Sire	105	Mastitis	106
Calving Ease Dam	94	Early Fert. Disorders	108
Vitality	106	Cysts	108

BEEF VALUES

Rel. 50%

FW Beef	99	Europ Classification	89
Average Daily Gain	103	Muscularity	98
Carcass	100		

TYPE TRAITS

Rel. 65%

TYPE Total Conformation Index

111

Frame	107	
Rump	104	
Feet & Legs	107	
Udder	113	
Stature	118	
Chest Measure	104	
Body Depth	105	
Top Line	97	
Rump Length	108	
Rump Width	109	
Rump Angle	95	
Thurl Position	96	
Rear Leg - Side View	99	
Hock Development	100	
Pasterns	108	
Foot Angle	111	
Fore Udder Length	101	
Rear Udder Width	110	
Rear Udder Height	109	
Udder Cleft	99	
Udder Depth	114	
Fore Udder Attachment	108	
Udder Balance	95	
Teat Length	93	
Teat Thickness	113	
Front Teat Placement	105	
Rear Teat Placement	99	
Teat Direction (Rear)	105	
Additional Teats	97	

Reference : 04/2024

31/10/2022



ROSABELLE (Dam)

Sire: PHENIX (NARCOTIC)
 Dam: ROSABELLE

MGS: SILVER (KANNON)
 MGD: NORWAY

MGGS: JEROBOAM
 MGGD: HAPPY



TERRAZ

GZW 125

Total Merit Index

ÖZW 116

Organic TMI

K-Cn **BB** | B-Cn **A2A2** | aAa **642513**

PRODUCTION

Rel. 77%

MW Milk Index	116	Butterfat %	0.06%
Milk	379kg	Protein	22kg
Butterfat	21kg	Protein %	0.10%

FITNESS

Rel. 68%

Fitness	111	Udder Health	108
Longevity	104	Somatic Cell Count	110
Persistency	104	Claw Health Index	97
Prod. Increase	104	Milking Speed	82
Fertility Index	110	Milking Behaviour	91
Calving Ease Sire	103	Mastitis	96
Calving Ease Dam	111	Early Fert. Disorders	107
Vitality	94	Cysts	100

BEEF VALUES

Rel. 50%

FW Beef	96	Europ Classification	89
Average Daily Gain	99	Muscularity	101
Carcass	100		

TYPE TRAITS

Rel. 67%

TYPE Total Conformation Index	114
Frame	114
Rump	106
Feet & Legs	104
Udder	110
Stature	119
Chest Measure	112
Body Depth	108
Top Line	110
Rump Length	108
Rump Width	110
Rump Angle	106
Thurl Position	104
Rear Leg - Side View	96
Hock Development	94
Pasterns	110
Foot Angle	113
Fore Udder Length	101
Rear Udder Width	99
Rear Udder Height	111
Udder Cleft	95
Udder Depth	113
Fore Udder Attachment	105
Udder Balance	108
Teat Length	104
Teat Thickness	94
Front Teat Placement	106
Rear Teat Placement	116
Teat Direction (Rear)	107
Additional Teats	106

Touareg

FR 3100722793
French Reg. No. A1884

Brown Swiss

05 01/10/2022



^ PAYETTE (Dam)

- Sire: **O MALLEY** (BENDER)
- Dam: **PAYETTE**
- MGS: **AMOR** (ANIBAL)
- MGD: **MIREINETTE**
- MGGS: **HUXOY**
- MGGD: **IREINETTE**

GZW 121

Total Merit Index

ÖZW 119

Organic TMI

K-Cn **BB** | B-Cn **A2A2** | aAa **516342**

PRODUCTION

Rel. 83%

MW Milk Index	114	Butterfat %	0.09%
Milk	298kg	Protein	18kg
Butterfat	20kg	Protein %	0.09%

FITNESS

Rel. 75%

Fitness	109	Udder Health	107
Longevity	110	Somatic Cell Count	103
Persistency	105	Claw Health Index	102
Prod. Increase	111	Milking Speed	102
Fertility Index	104	Milking Behaviour	104
Calving Ease Sire	97	Mastitis	108
Calving Ease Dam	100	Early Fert. Disorders	106
Vitality	97	Cysts	102

BEEF VALUES

Rel. 60%

FW Beef	94	Europ Classification	96
Average Daily Gain	94	Muscularity	108
Carcass	101		

TYPE TRAITS

Rel. 74%

TYPE Total Conformation Index

118

Frame	114	
Rump	109	
Feet & Legs	109	
Udder	115	
Stature	116	
Chest Measure	112	
Body Depth	111	
Top Line	101	
Rump Length	117	
Rump Width	112	
Rump Angle	106	
Thurl Position	103	
Rear Leg - Side View	101	
Hock Development	91	
Pasterns	111	
Foot Angle	115	
Fore Udder Length	104	
Rear Udder Width	101	
Rear Udder Height	105	
Udder Cleft	115	
Udder Depth	110	
Fore Udder Attachment	115	
Udder Balance	110	
Teat Length	103	
Teat Thickness	105	
Front Teat Placement	107	
Rear Teat Placement	111	
Teat Direction (Rear)	109	
Additional Teats	100	

Reference : 04/2024

Thalassa

FR 1222133242
French Reg. No. A1882

Brown Swiss

05 07/08/2022

NEW

5♀
SEXED



^ PISTON (Sire)

- Sire: **PISTON** (BAYS)
- Dam: **REUSSITE**
- MGS: **ARISTO** (AMOR)
- MGD: **ODYSSEE**
- MGGS: **LOUSTIC**
- MGGD: **IRONIE**

ISU 174
Total Merit Index

INEL 48
Economical Dairy Index

K-Cn **BB** | B-Cn **A2A2** | aAa **561432**

PRODUCTION TRAITS

Rel. 78

Milk	989 kg	Protein Content	0.8 %
Fat Content	1.3 %	Protein	38 kg
Fat	49 kg		

FUNCTIONAL TRAITS

Udder Health	2.3	Somatic Cells Count	2.3
Clinical Mastitis	1.9	Reproduction	0.4
Fertility Cows	-0.1	Fertility Heifers	0.0
Interval Calving - 1st Ai	1.3	Longevity	1.3
Milking Speed	-0.4	Temperament	0.0
Calving Ease	101	Calving Abilities	102

TYPE TRAITS

Rel. 79

Type	0.9	
Frame	0.3	
Stature	-0.2	
Chest Width	0.4	
Body Depth	0.5	
Back Line	0.0	
Dairy Form	0.5	
Body Condition Score	-0.2	
Muscularity	0.1	
Rump	0.2	
Rump Length	0.2	
Rump Width	0.0	
Rump Angle	-0.1	
Thurl Position	0.7	
Feet & Legs	1.2	
Hock Thickness	0.1	
Hock Angle	-0.9	
Foot Angle	1.0	
Hoof Depth	0.1	
Udder	0.6	
Udder Depth	0.8	
Udder Cleft	0.4	
Rear Udder Height	0.3	
Rear Udder Width	0.1	
Fore Udder Length	0.5	
Fore Udder Attachment	0.0	
Udder Balance	0.4	
Front Teat Placement	-0.2	
Rear Teat Placement	-0.4	
Teat Direction	0.3	
Teat Length	0.0	
Teat Diameter	-0.8	

Reference : 04/2024

Urion P

FR 4823016891
French Reg. No. A2209

29/01/2023



Brown Swiss



^ Reaction (Dam)

GZW 1382 59%
Total Merit Index

WZW 125
Pasture Breeding Value

K-Cn **BB** | B-Cn **A2A2** | aAa **156324**

PRODUCTION

MIW 136

Milk	869 kg	Fat	44 kg
Fat %	0.11 %	Protein	40 kg
Protein %	0.13 %		

FITNESS

FIW 112

Longevity	114
Persistency	103
Fertility	104
Somatic cell score (SCS)	102
NRR Daughters	96
Interval calving - 1st AI	108
BV milking speed	109

TYPE

EXT 118

Frame	111	
Rump	102	
Feet & legs	120	+
Udder	125	+
Rump stature	112	
Body depth	113	
Strength	105	
Back line	100	
Muscling	98	
Rump length	112	
Rump width	95	
Rump angle	99	
Thurl position	101	
Hock quality	101	
Hock angle	116	
Pasterns	106	
Heel height	115	
Fore udder length	106	
Fore udder attachment	122	+
Rear udder width	112	
Rear udder height	125	+
Udder depth	113	
Udder balance	117	
Udder cleft	114	
Teat length	88	-
Teat diameter	107	
Teat direction	116	
Fore teat placement	124	+
Rear teat placement	119	

Sire: **LEON PP** (FILOMEN P)

Dam: **REACTION**

MGS: **JANCO** (JAGUAR CH)

MGD: **OPTION**

MGGs: **SUPERSTAR**

MGGD: **MUNITION**

Reference : 04/2024

Ultratop

FR 1223220030
French Reg. No. A2208

Brown Swiss

21/01/2023

NEW

5♀
SEXED



INDE 28 (4th dam)

- Sire: **ADEE** (HUGE)
- Dam: **RAZZIA 76**
- MGS: **SPERANZIO** (SUPERSTAR)
- MGD: **ORLANE**
- MGGS: **PIERO**
- MGGD: **LOUTRE 76**



URGELE 23 (7th dam)

GZW 1367 59%
Total Merit Index

WZW 125
Pasture Breeding Value

K-Cn **BB** | β-Cn **A2A2** | aAa **246135**

PRODUCTION

MIW 126

Milk	599 kg	Fat	22 kg
Fat %	-0.03 %	Protein	31 kg
Protein %	0.14 %		

FITNESS

FIW 119

Longevity	122
Persistency	107
Fertility	99
Somatic cell score (SCS)	123
NRR Daughters	97
Interval calving - 1st AI	103
BV miling speed	95

TYPE

EXT 119

Frame	109	
Rump	108	
Feet & legs	119	
Udder	128	+
Rump stature	112	
Body depth	103	
Strength	106	
Back line	103	
Muscling	113	
Rump length	108	
Rump width	101	
Rump angle	99	
Thurl position	103	
Hock quality	95	
Hock angle	107	
Pasterns	128	+
Heel height	121	+
Fore udder length	98	
Fore udder attachment	121	+
Rear udder width	113	
Rear udder height	118	
Udder depth	128	+
Udder balance	122	+
Udder cleft	111	
Teat length	91	
Teat diameter	87	
Teat direction	116	
Fore teat placement	105	
Rear teat placement	109	

Reference : 04/2024

Titanium

FR 122244648
French Reg. No. A1065

Brown Swiss

26/02/2022



^ TITANIUM

Sire: **NORO** (ANTONOV)
 Dam: **FR1219002767**

MGS: **NICE GP** (FACT)
 MGD: **NEWIE**

MGGs: **ALASKO**
 MGGD: **ELEIS**



PENNIE (Dam) ^

GZW 137 Total Merit Index **ÖZW 132** Organic TMI
 K-Cn **BB** | β-Cn **A2A2** | aAa **261435**

PRODUCTION Rel. 81%

MW Milk Index	119	Butterfat %	0.04 %
Milk	496 kg	Protein	29 kg
Butterfat	24 kg	Protein %	0.13 %

FITNESS Rel. 72%

Fitness	121	Udder Health	115
Longevity	114	Somatic Cell Count	115
Persistency	115	Claw Health Index	106
Prod. Increase	117	Milking Speed	92
Fertility Index	111	Milking Behaviour	106
Calving Ease Sire	104	Mastitis	101
Calving Ease Dam	105	Early Fert. Disorders	109
Vitality	104	Cysts	105

BEEF VALUES Rel. 56%

FW Beef	99	Europ Classification	94
Average Daily Gain	100	Muscularity	109
Carcass	102		

TYPE TRAITS Rel. 71%

TYPE Total Conformation Index		118
Frame	111	
Rump	101	
Feet & Legs	108	
Udder	119	
Stature	121	+
Chest Measure	107	
Body Depth	109	
Top Line	114	
Rump Length	109	
Rump Width	84	-
Rump Angle	112	
Thurl Position	105	
Rear Leg - Side View	101	
Hock Development	99	
Pasterns	115	
Foot Angle	110	
Fore Udder Length	94	
Rear Udder Width	93	
Rear Udder Height	112	
Udder Cleft	104	
Udder Depth	125	+
Fore Udder Attachment	113	
Udder Balance	105	
Teat Length	91	
Teat Thickness	100	
Front Teat Placement	110	
Rear Teat Placement	95	
Teat Direction (Rear)	93	
Additional Teats	105	

Reference : 04/2024

Maestro GP

FR 1536244769
French Reg. No. 91029

Brown Swiss

24/05/2016



^ ODESSA (Daughter)

ONE OF THE BEST PROVEN IN GERMANY

- + Excellent size-to-chest width ratio
- + Outstanding udders
- + Douane family with the proof to match

Sire: **IFEELING** (VOLVO)
Dam: **GALA GP**
MGS: **GLENN** (GORDON)
MGD: **DOUANE**
MGGS: **VIGOR**
MGGD: **TRIOMPHE**



DOUANE (Maternal grand dam) ^

GZW 137

Total Merit Index

ÖZW 129

Organic TMI

K-Cn **BB** | B-Cn **A2A2**

PRODUCTION

MW Milk Index	120	Butterfat %	0.02%
Milk	484kg	Protein	31kg
Butterfat	22kg	Protein %	0.16%

FITNESS

Fitness	114	Somatic Cell Count	114
Longevity	116	Claw Health Index	101
Persistency	112	Milking Speed	88
Prod. Increase	112	Milking Behaviour	85
Fertility Index	98	Mastitis	105
Calving Ease Sire	95	Early Fert. Disorders	102
Calving Ease Dam	107	Cysts	104
Vitality	108	Milk Fever	105
Udder Health	114		

BEEF VALUES

FW Beef	121	Europ Classification	109
Average Daily Gain	119	Muscularity	112
Carcass	105		

TYPE TRAITS

TYPE Total Conformation Index	108
Frame	101
Rump	97
Feet & Legs	104
Udder	115
Stature	97
Chest Measure	113
Body Depth	94
Top Line	93
Rump Length	94
Rump Width	101
Rump Angle	94
Thurl Position	102
Rear Leg - Side View	103
Hock Development	94
Pasterns	102
Foot Angle	103
Fore Udder Length	102
Rear Udder Width	104
Rear Udder Height	99
Udder Cleft	96
Udder Depth	118
Fore Udder Attachment	107
Udder Balance	114
Teat Length	93
Teat Thickness	111
Front Teat Placement	108
Rear Teat Placement	103
Teat Direction (Rear)	106
Additional Teats	101

Reference : 04/2024

Toronto

FR 6126270941
French Reg. No. A1309
NAAB 202BS00941

Brown Swiss

30/01/2022



^ TORONTO

Sire: **PISTON** (BAYS)
Dam: **OLYSEE**
MGS: **SINATRA** (SEASIDEBLO)
MGD: **MAJESTE**
MGGS: **BLOOMING**
MGGD: **IMPERATRIC**



OLYSEE (Dam) ^

GZW 134

Total Merit Index

ÖZW 122

Organic TMI

K-Cn **BB** | B-Cn **A2A2**

PRODUCTION

Rel. 78%

MW Milk Index	126	Butterfat %	-0.09%
Milk	926 kg	Protein	39 kg
Butterfat	32 kg	Protein %	0.06%

FITNESS

Rel. 72%

Fitness	108	Vitality	98
Longevity	105	Udder Health	110
Persistency	107	Somatic Cell Count	111
Prod. Increase	108	Claw Health Index	102
Fertility Index	101	Milking Speed	92
Calving Ease Sire	97	Milking Behaviour	102
Calving Ease Dam	103	Mastitis	103

BEEF VALUES

Rel. 54%

FW Beef	96	Europ Classification	91
Average Daily Gain	101	Muscularity	95
Carcass	95		

TYPE TRAITS

Rel. 69%

TYPE Total Conformation Index	115
Frame	118
Rump	112
Feet & Legs	109
Udder	113
Stature	116
Chest Measure	106
Body Depth	119
Top Line	108
Rump Length	111
Rump Width	111
Rump Angle	109
Thurl Position	110
Rear Leg - Side View	94
Hock Development	106
Pasterns	101
Foot Angle	103
Fore Udder Length	115
Rear Udder Width	113
Rear Udder Height	106
Udder Cleft	92
Udder Depth	102
Fore Udder Attachment	107
Udder Balance	115
Teat Length	98
Teat Thickness	100
Front Teat Placement	99
Rear Teat Placement	89
Teat Direction (Rear)	90
Additional Teats	101

Reference : 04/2024

The sexual doses produced by Sexing Technologies with technology owned by XY, LLC and Inquran, LLC must be used only for artificial insemination. XY® is a trademark of XY, LLC. SexedULTRA, SexedULTRA 4M, Sexing Technologies and ST Genetics logos/brands, are trademarks of Inquran, LLC.

Snoopy

FR 2134272192
French Reg. No. A1656
NAAB 180H001656

Brown Swiss

19/12/2021



^ SNOOPY

THE NEW STAR AND MILK CHAMPION
+ New #1 ISU with amazing milk proof
+ The best Jonmar son

- Sire: **JONMAR** (BAYS)
- Dam: **PERDRIX**
- MGS: **MAJESTE** (CARTER)
- MGD: **LIQUEUR**
- MGGS: **HERCULES**
- MGGD: **INFLATION**



PERDRIX (Dam) ^

ISU 207
Total Merit Index

INEL 89
Economic Dairy Index

K-Cn **BB** | B-Cn **A2A2** | aAa **651423**

PRODUCTION TRAITS

Rel. 81

Milk	2436 kg	Protein Content	-1.4 ‰
Fat Content	-1.2 ‰	Protein	74 kg
Fat	92 kg		

FUNCTIONAL TRAITS

Udder Health	1.4	Somatic Cells Count	1.4
Clinical Mastitis	1.0	Reproduction	-0.2
Fertility Cows	-0.4	Fertility Heifers	-0.4
Interval Calving - 1st Ai	0.7	Longevity	1.7
Milking Speed	-0.6	Temperament	0.9
Calving Ease	106	Calving Abilities	102

TYPE TRAITS

Rel. 83

Type	1.2	
Frame	0.3	
Stature	0.2	
Chest Width	1.1	
Body Depth	0.5	
Back Line	-0.9	
Dairy Form	0.5	
Body Condition Score	-0.2	
Muscularity	0.0	
Rump	1.4	
Rump Length	0.2	
Rump Width	1.2	
Rump Angle	0.8	
Thurl Position	0.9	
Feet & Legs	1.6	
Hock Thickness	-1.6	
Hock Angle	-1.5	
Foot Angle	0.9	
Hoof Depth	1.1	
Udder	0.5	
Udder Depth	0.1	
Udder Cleft	-0.6	
Rear Udder Height	0.1	
Rear Udder Width	1.1	
Fore Udder Length	1.6	
Fore Udder Attachment	1.2	
Udder Balance	-0.1	
Front Teat Placement	-1.0	
Rear Teat Placement	-0.7	
Teat Direction	-0.4	
Teat Length	0.3	
Teat Diameter	0.7	

Reference : 04/2024

The sexes produced by Sexing Technologies with technology owned by X1, LLC and Inquran, LLC must be used only for artificial insemination. X1® is a trademark of X1, LLC. SexedULTRA, SexedULTRA 4M, Sexing Technologies and S1 Genetics logos/brands, are trademarks of Inquran, LLC.

Skyfall

FR 1220110950
French Reg. No. 98878

22/03/2021



Brown Swiss



^ SKYFALL

- + VERY COMPLETE OPTIMAL SON
- + GREAT MILK UDDERS & MUSCULARITY
- + FROM ZEUS CH ZEA EX 94 FAMILY

Sire: **OPTIMAL** (SINATRA)
Dam: **OHEA ABF**

MGS: **LOUSTIC** (BIVER)
MGD: **MAJOLIEABF**

MGGS: **ANIBAL**
MGGD: **ABF JOLIE**



OHEA ABF (Dam) ^

GZW 130
Total Merit Index

ÖZW 124
Organic TMI

K-Cn **BB** | B-Cn **A2A2** | aAa **615243**

PRODUCTION

MW Milk Index	117	Butterfat %	-0.08 %
Milk	739kg	Protein	23kg
Butterfat	24kg	Protein %	-0.04 %

FITNESS

Fitness	118	Udder Health	117
Longevity	110	Somatic Cell Count	114
Persistency	115	Claw Health Index	94
Prod. Increase	112	Milking Speed	99
Fertility Index	110	Milking Behaviour	101
Calving Ease Sire	98	Mastitis	113
Calving Ease Dam	101	Early Fert. Disorders	101
Vitality	96	Cysts	108

BEEF VALUES

FW Beef	97	Europ Classification	97
Average Daily Gain	98	Muscularity	106
Carcass	99		

TYPE TRAITS

TYPE Total Conformation Index	114
Frame	111
Rump	106
Feet & Legs	98
Udder	116
Stature	108
Chest Measure	105
Body Depth	105
Top Line	118
Rump Length	107
Rump Width	102
Rump Angle	99
Thurl Position	101
Rear Leg - Side View	88
Hock Development	91
Pasterns	102
Foot Angle	100
Fore Udder Length	112
Rear Udder Width	102
Rear Udder Height	105
Udder Cleft	91
Udder Depth	118
Fore Udder Attachment	107
Udder Balance	103
Teat Length	82
Teat Thickness	92
Front Teat Placement	121
Rear Teat Placement	111
Teat Direction (Rear)	110
Additional Teats	104

Reference : 04/2024

The sexed doses produced by Sexing Technologies with technology owned by XI, LLC and Inquran, LLC must be used only for artificial insemination. XI® is a trademark of XI, LLC. SexedULTRA, SexedULTRA 4M, Sexing Technologies and ST Genetics logos/brands, are trademarks of Inquran, LLC.

Tabéo

FR 2142763752
French Reg. No. A1307
NAAB 180H001307

Brown Swiss

06/02/2022



^ TABEO

- + VERY GOOD FRAMES & TOP FITNESS
- + HIGH COMPONENTS
- + NEW COW FAMILY WITH GREAT LACTATIONS

- Sire: **ARISTO** (AMOR)
- Dam: **OMEGA**
- MGS: **BENDER** (BIVER)
- MGD: **MIRACLE**
- MGGs: **JEROBOAM**
- MGGD: **FRIMOUSSE**



OMEGA (Dam) ^

GZW 130

Total Merit Index

ÖZW 120

Organic TMI

K-Cn **BB** | β-Cn **A2A2** | aAa **261435**

PRODUCTION

Rel. 83%

MW Milk Index	119	Butterfat %	-0.04 %
Milk	704 kg	Protein	26 kg
Butterfat	27 kg	Protein %	0.01 %

FITNESS

Rel. 75%

Fitness	115	Udder Health	112
Longevity	103	Somatic Cell Count	111
Persistency	121	Claw Health Index	96
Prod. Increase	108	Milking Speed	92
Fertility Index	114	Milking Behaviour	112
Calving Ease Sire	94	Mastitis	110
Calving Ease Dam	102	Early Fert. Disorders	108
Vitality	86	Cysts	107

BEEF VALUES

Rel. 61%

FW Beef	102	Europ Classification	97
Average Daily Gain	105	Muscularity	101
Carcass	94		

TYPE TRAITS

Rel. 74%

TYPE Total Conformation Index		112
Frame	116	
Rump	109	
Feet & Legs	103	
Udder	108	
Stature	122	+
Chest Measure	108	
Body Depth	117	
Top Line	109	
Rump Length	112	
Rump Width	105	
Rump Angle	109	
Thurl Position	103	
Rear Leg - Side View	95	
Hock Development	93	
Pasterns	108	
Foot Angle	111	
Fore Udder Length	106	
Rear Udder Width	108	
Rear Udder Height	99	
Udder Cleft	97	
Udder Depth	109	
Fore Udder Attachment	104	
Udder Balance	98	
Teat Length	97	
Teat Thickness	102	
Front Teat Placement	108	
Rear Teat Placement	102	
Teat Direction (Rear)	107	
Additional Teats	100	

14/09/2020



^ BSF OSOMET (Dam)

- + Milk and protein
- + Healthy and functional udders
- + Large and deep females

Sire: BARCA (HAEGAR)

Dam: OSOMET

MGS: SINATRA (SEASIDEBLO)

MGD: MISS PF

MGGS: HARMONICA

MGGD: ICONE PF



ROQUEFORT ^

GZW 126

Total Merit Index

ÖZW 119

Organic TMI

K-Cn **BB** | β-Cn **A2A2** | aAa **234165**

PRODUCTION

Rel. 83%

MW Milk Index	119	Butterfat %	-0.03 %
Milk	568 kg	Protein	29 kg
Butterfat	22 kg	Protein %	0.10 %

FITNESS

Rel. 76%

Fitness	105	Udder Health	109
Longevity	102	Somatic Cell Count	105
Persistency	102	Claw Health Index	96
Prod. Increase	108	Milking Speed	101
Fertility Index	99	Milking Behaviour	103
Calving Ease Sire	95	Mastitis	113
Calving Ease Dam	105	Early Fert. Disorders	104
Vitality	105	Cysts	99

BEEF VALUES

Rel. 61%

FW Beef	95	Europ Classification	87
Average Daily Gain	98	Muscularity	92
Carcass	100		

TYPE TRAITS

Rel. 74%

TYPE Total Conformation Index	120	
Frame	120	+
Rump	115	
Feet & Legs	107	
Udder	117	
Stature	126	+
Chest Measure	107	
Body Depth	111	
Top Line	106	
Rump Length	125	+
Rump Width	110	
Rump Angle	103	
Thurl Position	103	
Rear Leg - Side View	102	
Hock Development	105	
Pasterns	101	
Foot Angle	103	
Fore Udder Length	105	
Rear Udder Width	106	
Rear Udder Height	110	
Udder Cleft	108	
Udder Depth	114	
Fore Udder Attachment	105	
Udder Balance	105	
Teat Length	90	
Teat Thickness	101	
Front Teat Placement	117	
Rear Teat Placement	117	
Teat Direction (Rear)	102	
Additional Teats	99	

Talico P

FR 4909400525
French Reg. No. A1513
NAAB 202BS70941

Brown Swiss

12/06/2022



^ LBBROSALIC (Dam)

- Sire: **VELES P** (VIDAL)
- Dam: **LBBROSALIC**
- MGS: **O MALLEY** (BENDER)
- MGD: **LBB LALICE**
- MGGS: **VIGOR**
- MGGD: **LBB GENIAL**



LBB LALICE (Grand dam) ^

ISU 158
Total Merit Index

INEL 53
Economic Dairy Index

K-Cn **AB** | B-Cn **A1A2**

PRODUCTION TRAITS

Rel. 81

Milk	1410 kg	Protein Content	0.1 %
Fat Content	-4.3 %	Protein	50 kg
Fat	33 kg		

FUNCTIONAL TRAITS

Udder Health	0.0	Somatic Cells Count	-0.3
Clinical Mastitis	0.4	Reproduction	-0.3
Fertility Cows	0.0	Fertility Heifers	-0.5
Interval Calving - 1st Ai	0.3	Longevity	1.2
Milking Speed	-0.2	Temperament	0.2
Calving Ease	106	Calving Abilities	112

TYPE TRAITS

Rel. 83

Type	1.3	
Frame	0.2	
Stature	1.0	
Chest Width	0.5	
Body Depth	0.5	
Back Line	-1.3	
Dairy Form	0.4	
Body Condition Score	-0.3	
Muscularity	0.1	
Rump	0.4	
Rump Length	0.8	
Rump Width	0.0	
Rump Angle	-0.2	
Thurl Position	0.7	
Feet & Legs	1.7	
Hock Thickness	0.5	
Hock Angle	-0.7	
Foot Angle	1.0	
Hoof Depth	0.9	
Udder	1.0	
Udder Depth	0.4	
Udder Cleft	0.6	
Rear Udder Height	0.7	
Rear Udder Width	0.4	
Fore Udder Length	1.3	
Fore Udder Attachment	0.3	
Udder Balance	1.7	
Front Teat Placement	0.3	
Rear Teat Placement	0.2	
Teat Direction	-0.3	
Teat Length	-0.8	
Teat Diameter	0.5	

Reference : 04/2024

The sexual doses produced by Sexing Technologies with technology owned by XY, LLC and Inquran, LLC must be used only for artificial insemination. XY® is a trademark of XY, LLC. SexedULTRA, SexedULTRA 4M, Sexing Technologies and ST Genetics logos/brands, are trademarks of Inquran, LLC.

No Decibel

FR 4818006175
French Reg. No. 93281

Brown Swiss

19/08/2017



^ SAPHIR (Daughter)

- + Great combination of milk and udder
- + Feet and legs specialist
- + Ultra confirmed Tigelle family

Sire: DAREDEVIL (BRADY)
Dam: 48LUNABELL

MGS: ANIBAL (VIGOR)
MGD: 02ISABELLE

MGGS: DALLY
MGGD: CHANTELLE



TIGELLE (4th dam) ^

GZW 1134 82%
Total Merit Index

WZW 106
Pasture Breeding Value

K-Cn **AB** | B-Cn **A2A2** | aAa **342156**

PRODUCTION

MIW 111

Milk	372kg	Fat	10kg
Fat %	-0.07%	Protein	13kg
Protein %	0.01%		

FITNESS

FIW 100

Longevity	109
Persistency	104
Fertility	93
Somatic cell score (SCS)	106
NRR Daughters	109
Interval calving - 1st AI	85
BV miling speed	104

TYPE

EXT 108

Frame	95	
Rump	82	
Feet & legs	108	
Udder	122	+
Rump stature	107	
Body depth	99	
Strength	101	
Back line	82	
Muscling	96	
Rump length	113	
Rump width	92	
Rump angle	84	
Thurl position	86	
Hock quality	76	
Hock angle	100	
Pasterns	119	
Heel height	115	
Fore udder length	102	
Fore udder attachment	118	
Rear udder width	102	
Rear udder height	126	+
Udder depth	125	+
Udder balance	138	+
Udder cleft	110	
Teat length	91	
Teat diameter	93	
Teat direction	89	
Fore teat placement	91	
Rear teat placement	101	

Reference : 04/2024

Saphir

FR 2152152153
French Reg. No. A1308
NAAB 180BSA1308

Brown Swiss

19/11/2021



^ OBLIQUE (Dam)

Sire: **PACTOLE** (BLOWER)
Dam: **OBLIQUE**

MGS: **AMOR** (ANIBAL)
MGD: **HERBE**

MGGS: **TRACTION**
MGGD: **FABULET**



SAPHIR ^

GZW 1445 59%
Total Merit Index

WZW 128
Pasture Breeding Value

K-Cn **BB** | B-Cn **A2A2** | aAa **165234**

PRODUCTION

MIW 144

Milk	1134 kg	Fat	48 kg
Fat %	0.03 %	Protein	49 kg
Protein %	0.13 %		

FITNESS

FIW 119

Longevity	114
Persistency	107
Fertility	107
Somatic cell score (SCS)	119
NRR Daughters	100
Interval calving - 1st AI	106
BV milking speed	113

TYPE

EXT 109

Frame	108	
Rump	110	
Feet & legs	105	
Udder	112	
Rump stature	118	
Body depth	112	
Strength	101	
Back line	101	
Muscling	94	
Rump length	113	
Rump width	94	
Rump angle	105	
Thurl position	110	
Hock quality	76	-
Hock angle	88	-
Pasterns	125	+
Heel height	126	+
Fore udder length	114	
Fore udder attachment	108	
Rear udder width	124	+
Rear udder height	103	
Udder depth	102	
Udder balance	96	
Udder cleft	100	
Teat length	91	
Teat diameter	79	-
Teat direction	113	
Fore teat placement	121	+
Rear teat placement	101	

Reference : 04/2024

Superboy

FR 3555605411
French Reg. No. A1083

Brown Swiss

03/11/2021



^ RASTAROKET

Sire: **PACTOLE** (BLOWER)
Dam: **PETULA**
MGS: **ANTONOV** (ANIBAY)
MGD: **NUTELLA 23**
MGGS: **JACARTA**
MGGD: **GRASIE 236**



OCEANE (Dam) ^

GZW 1411 59%
Total Merit Index

WZW 123
Pasture Breeding Value

K-Cn **BB** | B-Cn **A2A2** | aAa **642513**

PRODUCTION

MIW 145

Milk	929 kg	Fat	57 kg
Fat %	0.26 %	Protein	50 kg
Protein %	0.23 %		

FITNESS

FIW 110

Longevity	107
Persistency	105
Fertility	101
Somatic cell score (SCS)	110
NRR Daughters	99
Interval calving - 1st AI	102
BV miling speed	109

TYPE

EXT 113

Frame	113	
Rump	109	
Feet & legs	110	
Udder	116	
Rump stature	122	+
Body depth	116	
Strength	103	
Back line	109	
Muscling	98	
Rump length	113	
Rump width	102	
Rump angle	109	
Thurl position	109	
Hock quality	86	-
Hock angle	92	
Pasterns	128	+
Heel height	124	+
Fore udder length	113	
Fore udder attachment	110	
Rear udder width	106	
Rear udder height	121	+
Udder depth	109	
Udder balance	113	
Udder cleft	99	
Teat length	93	
Teat diameter	93	
Teat direction	108	
Fore teat placement	112	
Rear teat placement	102	

Reference : 04/2024

Superboy

FR 3555605411
French Reg. No. A1083

Brown Swiss

03/11/2021



^ PETULA (Dam)

Sire: **PACTOLE** (BLOWER)
Dam: **PETULA**

MGS: **ANTONOV** (ANIBAY)
MGD: **NUTELLA 23**

MGGS: **JACARTA**
MGGD: **GRASIE 236**



SUPERBOY ^

GZW 1411 59%
Total Merit Index

WZW 123
Pasture Breeding Value

K-Cn **BB** | B-Cn **A2A2** | aAa **642513**

PRODUCTION

MIW 145

Milk	929 kg	Fat	57 kg
Fat %	0.26 %	Protein	50 kg
Protein %	0.23 %		

FITNESS

FIW 110

Longevity	107
Persistency	105
Fertility	101
Somatic cell score (SCS)	110
NRR Daughters	99
Interval calving - 1st AI	102
BV miling speed	109

TYPE

EXT 113

Frame	113	
Rump	109	
Feet & legs	110	
Udder	116	
Rump stature	122	+
Body depth	116	
Strength	103	
Back line	109	
Muscling	98	
Rump length	113	
Rump width	102	
Rump angle	109	
Thurl position	109	
Hock quality	86	-
Hock angle	92	
Pasterns	128	+
Heel height	124	+
Fore udder length	113	
Fore udder attachment	110	
Rear udder width	106	
Rear udder height	121	+
Udder depth	109	
Udder balance	113	
Udder cleft	99	
Teat length	93	
Teat diameter	93	
Teat direction	108	
Fore teat placement	112	
Rear teat placement	102	

Reference : 04/2024

Nice GP

FR 1537235547
French Reg. No. 92655

03/05/2017



Brown Swiss



^ PARRURE (Daughter)

THE BEST FACT SON IN SWITZERLAND
+ Outstanding type cow family of Douane
+ Great powerfull and fertile cows
+ Extreme udder quality

Sire: **FACT** (ANIBAL)
Dam: **JOLIE GP**
MGS: **CALVIN** (NESTA)
MGD: **GLENA GP**
MGGS: **GLENN**
MGGD: **DOUANE**



JOLIE GP (Dam) ^

GZW 1363 94%
Total Merit Index

WZW 130
Pasture Breeding Value

K-Cn **BB** | B-Cn **A1A2** | aAa **243615**

PRODUCTION

MIW 109

Milk	442kg	Fat	-5kg
Fat %	-0.31%	Protein	13kg
Protein %	-0.03%		

FITNESS

FIW 141

Longevity	125
Persistency	108
Fertility	122
Somatic cell score (SCS)	131
NRR Daughters	100
Interval calving - 1st AI	120
BV miling speed	113

TYPE

EXT 115

Frame	108	
Rump	102	
Feet & legs	114	
Udder	124	+
Rump stature	111	
Body depth	104	
Strength	112	
Back line	94	
Muscling	109	
Rump length	112	
Rump width	97	
Rump angle	96	
Thurl position	99	
Hock quality	114	
Hock angle	121	+
Pasterns	114	
Heel height	100	
Fore udder length	88	-
Fore udder attachment	145	+
Rear udder width	102	
Rear udder height	107	
Udder depth	121	+
Udder balance	115	
Udder cleft	109	
Teat length	105	
Teat diameter	123	+
Teat direction	84	-
Fore teat placement	107	
Rear teat placement	96	

Reference : 04/2024

The served doses produced by Sexing Technologies with technology owned by XI, LLC and Inquran, LLC must be used only for artificial insemination. YX@ is a trademark of XI, LLC. SexedULTRA, SexedULTRA 4M, Sexing Technologies and ST Genetics logos/brands, are trademarks of Inquran, LLC.

Optimal

12/11/2018

FR 5238483960

French Reg. No. 95156

NAAB 180BS95156



Brown Swiss

Reference : 04/2024



^ DLS NOUMEA (Daughter)

TOP INTERNATIONAL BULL NOW PROVEN

- + High milk proof all rankings
- + Medium sized cows with lots of widths
- + Top udder health

Sire: **SINATRA** (SEASIDEBLO)
 Dam: **MANA**
 MGS: **BLOOMING** (GLENN)
 MGD: **FIONA**
 MGGS: **VIGOR**
 MGGD: **CADIX**



SICILE (Daughter) ^

ISU 178

Total Merit Index

INEL 37

Economical Dairy Index

K-Cn **BB** | B-Cn **A2A2** | aAa **156324**

176 Daughters / 55 Herds / Rel. 92

PRODUCTION TRAITS

Milk	1183kg	Protein Content	-0.8%
Fat Content	-2.0%	Protein	33kg
Fat	33kg		

FUNCTIONAL TRAITS

Udder Health	1.6	Somatic Cells Count	1.9
Clinical Mastitis	0.7	Reproduction	1.3
Fertility Cows	0.1	Fertility Heifers	1.0
Interval Calving - 1st Ai	1.4	Longevity	2.3
Milking Speed	0.0	Temperament	0.1
Calving Ease	104	Calving Abilities	103
Vitality Calves At Birth	101		

TYPE TRAITS

73 Daughters / 23 Herds / Rel. 93

Type	1.9	
Frame	1.2	
Stature	0.5	
Chest Width	1.3	
Body Depth	0.7	
Back Line	1.2	
Dairy Form	1.0	
Body Condition Score	1.3	
Muscularity	1.3	
Rump	0.3	
Rump Length	0.8	
Rump Width	0.7	
Rump Angle	-0.5	
Thurl Position	0.3	
Feet & Legs	1.5	
Hock Thickness	-1.5	
Hock Angle	-1.6	
Foot Angle	0.8	
Hoof Depth	0.8	
Udder	1.5	
Udder Depth	2.0	+
Udder Cleft	-0.1	
Rear Udder Height	1.1	
Rear Udder Width	1.1	
Fore Udder Length	0.6	
Fore Udder Attachment	1.1	
Udder Balance	0.5	
Front Teat Placement	0.8	
Rear Teat Placement	0.6	
Teat Direction	0.6	
Teat Length	-1.7	
Teat Diameter	-1.7	

The sexual doses produced by Sexing Technologies with technology owned by X1, LLC and Inquran, LLC must be used only for artificial insemination. X1, LLC and Inquran, LLC are trademarks of X1, LLC, SexedULTRA, SexedULTRA 4M, Sexing Technologies and 51 Genetics logos/brands, are trademarks of Inquran, LLC.

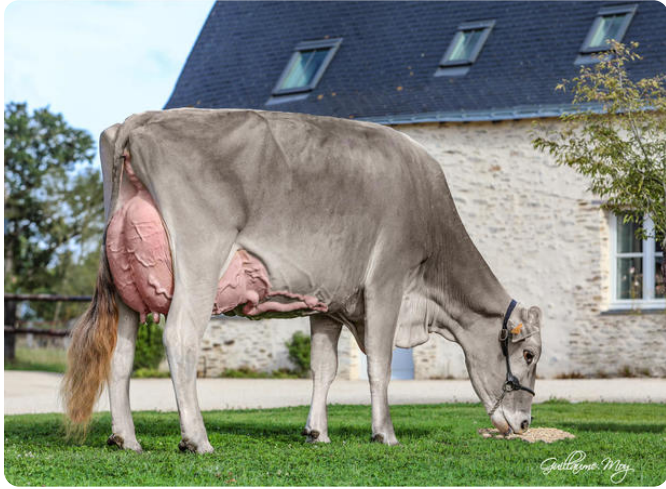


LBB Ralice

FR 4909400277
French Reg. No. A0276
NAAB 202SB00277

Brown Swiss

11/10/2020



^ LBB LALICE (Dam)

+ The Best O Malley son available

+ Milk and Type

+ Complete fitness traits

- Sire: **O MALLEY** (BENDER)
- Dam: **LBB LALICE**
- MGS: **VIGOR** (PRESIDENT)
- MGD: **LBB GENIAL**
- MGGS: **JULENG**
- MGGD: **BRUNETTE**



LBB RALICE ^

ISU 176
Total Merit Index

INEL 57
Economical Dairy Index

K-Cn **BB** | B-Cn **A2A2** | aAa **423651**

PRODUCTION TRAITS

		Rel. 82	
Milk	1387 kg	Protein Content	0.7 %
Fat Content	-2.6 %	Protein	51 kg
Fat	39 kg		

FUNCTIONAL TRAITS

Udder Health	0.8	Somatic Cells Count	0.5
Clinical Mastitis	1.0	Reproduction	0.3
Fertility Cows	0.3	Fertility Heifers	-0.1
Interval Calving - 1st Ai	0.6	Longevity	-0.3
Milking Speed	0.3	Temperament	0.7
Calving Ease	102	Calving Abilities	112
Vitality Calves At Birth	94		

TYPE TRAITS

		Rel. 83	
Type	2.6		+
Frame	1.1		
Stature	1.6		
Chest Width	0.9		
Body Depth	1.1		
Back Line	0.0		
Dairy Form	1.4		
Body Condition Score	-0.2		
Muscularity	-0.2		
Rump	2.2		+
Rump Length	1.8		
Rump Width	0.5		
Rump Angle	1.4		
Thurl Position	1.2		
Feet & Legs	2.1		+
Hock Thickness	0.4		
Hock Angle	-0.8		
Foot Angle	1.3		
Hoof Depth	1.2		
Udder	1.9		
Udder Depth	1.2		
Udder Cleft	1.6		
Rear Udder Height	1.3		
Rear Udder Width	0.8		
Fore Udder Length	1.1		
Fore Udder Attachment	0.8		
Udder Balance	1.8		
Front Teat Placement	1.0		
Rear Teat Placement	1.0		
Teat Direction	0.2		
Teat Length	-0.5		
Teat Diameter	0.1		

Reference : 04/2024

Openbar

29/12/2018

FR 2140705360
French Reg. No. 95656
NAAB 180BS95656



Brown Swiss



^ SCORIE (Daughter)

- + Exceptional level of fitness traits
- + Excellent udders and feet and legs
- + Small sized cows ideal for grazing

Sire: **DORIAN** (DARIO)
Dam: **MISS**

MGS: **ISOLD** (HUSOLD)
MGD: **FUTEE**

MGGS: **VIGOR**
MGGD: **CERISE**



OPENBAR ^

ISU 168
Total Merit Index

INEL 20
Economical Dairy Index

K-Cn **BB** | B-Cn **A2A2** | aAa **642513**

31 Daughters / 13 Herds / Rel. 87

PRODUCTION TRAITS

Milk	436 kg	Protein Content	-0.4 %
Fat Content	2.3 %	Protein	13 kg
Fat	35 kg		

FUNCTIONAL TRAITS

Udder Health	2.4	Somatic Cells Count	2.2
Clinical Mastitis	2.1	Reproduction	1.8
Fertility Cows	1.5	Fertility Heifers	0.5
Interval Calving - 1st Ai	1.7	Longevity	2.6
Milking Speed	-0.9	Temperament	0.2
Calving Ease	105	Calving Abilities	121
Vitality Calves At Birth	109		

TYPE TRAITS

8 Daughters / 5 Herds / Rel. 84

Type	1.4	
Frame	0.2	
Stature	0.0	
Chest Width	0.3	
Body Depth	-0.1	
Back Line	0.4	
Dairy Form	0.3	
Body Condition Score	0.6	
Muscularity	0.2	
Rump	0.7	
Rump Length	0.0	
Rump Width	0.3	
Rump Angle	0.8	
Thurl Position	0.0	
Feet & Legs	1.9	
Hock Thickness	0.2	
Hock Angle	-0.4	
Foot Angle	1.6	
Hoof Depth	1.2	
Udder	0.9	
Udder Depth	1.5	
Udder Cleft	0.1	
Rear Udder Height	0.7	
Rear Udder Width	0.0	
Fore Udder Length	-0.4	
Fore Udder Attachment	1.3	
Udder Balance	-0.3	
Front Teat Placement	0.1	
Rear Teat Placement	0.6	
Teat Direction	0.8	
Teat Length	-0.8	
Teat Diameter	-0.2	

Reference : 04/2024



^ SEPHORA (Daughter)

TOP BULL IN THE US

- + Many of his sons in the top PPR
- + Amazing contents
- + great fitness

Sire: **BLOWER** (BLOOMING)

Dam: **MUSOLDE**

MGS: **FACT** (ANIBAL)

MGD: **JISOLDE**

MGGs: **ZEPHIR**

MGGD: **DE0944212028**



SANELLE (Daughter) ^

ITE 1075

Total Economic Index

K-Cn **BB** | β -Cn **A2A2** | aAa **243615**

PRODUCTION

Milk	925 kg
Fat	45 kg
Fat %	0.32 %
Protein	47 kg
Protein %	0.27 %

FUNCTIONAL TRAITS

Longevity	105	
Milking speed	106	
Somatic cell score	119	
Disolabruna	125	+
Functionality & Fitness	130	+
Calving Interval	112	

TYPE

Type	111	
Udder	111	
Feet & Legs	119	
Stature	118	
Strenght	108	
Body depth	102	
Top line	106	
Rump angle	100	
Thurl width	110	
Rear legs set	83	-
Hock quality	109	
Pasterns	125	+
Hoof height	125	+
Fore udder att.	112	
Rear udder height	111	
Rear udder width	110	
Udder cleft	86	-
Udder depth	123	+
Teat direction	109	
Teat length	76	-

Tripoli de la Maie

FR 5455698482
French Reg. No. A1658

29/04/2022



Brown Swiss



^ TRIPOLI

THE NEW COMPLETE OPTIMAL SON
 + the complete bull that ticks all boxes
 + Ideal to correct short teats
 + New family with strength and production

- Sire: **OPTIMAL** (SINATRA)
- Dam: **LISELE MAI**
- MGS: **HAMSTER** (PAYSSL)
- MGD: **GISELLE**
- MGGS: **JUHUS**
- MGGD: **ALISELLE**



LISEL (Dam) ^

PPR 188

Progressive Performance Ranking

NM\$ 525

Net Merit (\$)

K-Cn **BB** | B-Cn **A2A2** | aAa **561423**

PRODUCTION

0 Dtrs / 0 Herds / 60% Rel.

Milk	1242 lbs
Fat	43 lbs
% Fat	-0.03 %
Protein	37 lbs
% Protein	-0.02 %
Net Merit (\$)	525
Fluid Merit (\$)	518
Cheese Merit (\$)	530
Grazing Merit (\$)	572

HEALTH AND REPRODUCTION

Gestation Length	1
Somatic Cell Score	2.75
Fertility Index	3.0
Productive Life	3.3
Daughter Calving Ease	2.6 %
Sire Calving Ease	2.7 %
Daughter Pregnancy Rate	3.8
Heifer Conception Rate	0.7
Cow Conception Rate	2.6
Livability	1.3
gEFI	5.6 %

TYPE TRAITS

0 Dtrs / 0 Herds / 60% Rel.

PTAT Total Conformation Index	-0.2
Udder Composite	0.35
Foot & Leg Composite	-0.1
Stature	-0.2
Strength	0.4
Body Depth	0.1
Dairy Form	-0.9
Rump Angle	-0.2
Thurl Width	0.5
Rear Legs - Side View	-0.1
Rear Legs - Rear View	0.0
Foot Angle	-0.1
Fore Udder Attachment	0.7
Rear Udder Height	-0.4
Rear Udder Width	0.4
Udder Cleft	0.9
Udder Depth	-0.1
Fore Teat Placement	-0.3
Teat Length	0.3

Reference : 04/2024

The sexed doses produced by Sexing Technologies with technology owned by XI, LLC and Inquran, LLC must be used only for artificial insemination. YX@ is a trademark of XI, LLC. SexedULTRA, SexedULTRA 4M, Sexing Technologies and ST Genetics logos/brands, are trademarks of Inquran, LLC.

Superboy

FR 3555605411
French Reg. No. A1083

Brown Swiss

03/11/2021



^ SUPERBOY

ISU 183
Total Merit Index

INEL 72
Economical Dairy Index

K-Cn **BB** | B-Cn **A2A2** | aAa **642513**

PRODUCTION TRAITS Rel. 75

Milk	1066 kg	Protein Content	2.9%
Fat Content	3.8%	Protein	55 kg
Fat	66 kg		

FUNCTIONAL TRAITS

Udder Health	0.6	Somatic Cells Count	0.5
Clinical Mastitis	0.7	Reproduction	0.2
Fertility Cows	0.0	Fertility Heifers	-0.3
Interval Calving - 1st Ai	1.1	Longevity	0.6
Milking Speed	0.3	Temperament	0.5
Calving Ease	107	Calving Abilities	111

TYPE TRAITS Rel. 83

Type	2.0		
Frame	1.4		
Stature	1.8		
Chest Width	0.5		
Body Depth	1.5		
Back Line	0.9		
Dairy Form	1.7		
Body Condition Score	-0.9		
Muscularity	-0.9		
Rump	1.1		
Rump Length	0.8		
Rump Width	0.7		
Rump Angle	0.6		
Thurl Position	0.4		
Feet & Legs	2.2		
Hock Thickness	0.5		
Hock Angle	-0.8		
Foot Angle	1.2		
Hoof Depth	1.4		
Udder	0.9		
Udder Depth	0.7		
Udder Cleft	-0.5		
Rear Udder Height	0.8		
Rear Udder Width	0.4		
Fore Udder Length	1.1		
Fore Udder Attachment	0.6		
Udder Balance	1.0		
Front Teat Placement	0.9		
Rear Teat Placement	0.5		
Teat Direction	0.7		
Teat Length	-0.9		
Teat Diameter	-0.9		

- Sire: **PACTOLE** (BLOWER)
- Dam: **PETULA**
- MGS: **ANTONOV** (ANIBAY)
- MGD: **NUTELLA 23**
- MGGS: **JACARTA**
- MGGD: **GRASIE 236**



PETULA (Dam) ^

Reference : 04/2024

The sexes produced by Sexing Technologies with technology owned by X1, LLC and Inquran LLC must be used only for artificial insemination. X1, LLC, SexedULTRA, SexedULTRA 4M, Sexing Technologies and ST Genetics logos/brands, are trademarks of Inquran, LLC.

Saturne

FR 1222244804
French Reg. No. A0820
NAAB 180BSA0820

Brown Swiss

05 01/11/2021



^ SATURNE

- Sire: **OPTIMAL** (SINATRA)
- Dam: **MADMOISELL**
- MGS: **IFEELING** (VOLVO)
- MGD: **IGELE**
- MGGS: **VIGOR**
- MGGD: **CHANTELLE**



MADMOISELLE (Dam) ^

ISU 178
Total Merit Index

INEL 63
Economical Dairy Index

K-Cn **BB** | B-Cn **A2A2** | aAa **165243**

PRODUCTION TRAITS

Rel. 82

Milk	1338 kg	Protein Content	0.9 %
Fat Content	0.6 %	Protein	51 kg
Fat	60 kg		

FUNCTIONAL TRAITS

Udder Health	1.0	Somatic Cells Count	1.2
Clinical Mastitis	0.5	Reproduction	0.8
Fertility Cows	0.3	Fertility Heifers	0.5
Interval Calving - 1st Ai	0.7	Longevity	1.1
Milking Speed	0.0	Temperament	0.6
Calving Ease	97	Calving Abilities	97

TYPE TRAITS

Rel. 83

Type	0.7	
Frame	0.3	
Stature	0.1	
Chest Width	0.4	
Body Depth	0.2	
Back Line	0.4	
Dairy Form	0.3	
Body Condition Score	-0.1	
Muscularity	-0.6	
Rump	-0.8	
Rump Length	-0.3	
Rump Width	0.0	
Rump Angle	-0.9	
Thurl Position	-0.1	
Feet & Legs	0.7	
Hock Thickness	-0.3	
Hock Angle	-0.5	
Foot Angle	0.3	
Hoof Depth	0.5	
Udder	0.8	
Udder Depth	1.1	
Udder Cleft	-1.0	
Rear Udder Height	0.9	
Rear Udder Width	1.0	
Fore Udder Length	0.1	
Fore Udder Attachment	0.4	
Udder Balance	0.0	
Front Teat Placement	0.7	
Rear Teat Placement	0.1	
Teat Direction	0.4	
Teat Length	-0.4	
Teat Diameter	-0.3	

Reference : 04/2024

Parmesan

FR 1539247284
French Reg. No. 95655

Brown Swiss

16/03/2019



^ PARMESAN

Sire: **SUPERSTAR** (BLOOMING)
Dam: **GALA GP**
MGS: **GLENN** (GORDON)
MGD: **DOUANE**
MGGS: **VIGOR**
MGGD: **TRIOMPHE**



DOUANE (Maternal grand dam) ^

GZW 1202 64%
Total Merit Index

WZW 112
Pasture Breeding Value

K-Cn **BB** | B-Cn **A2A2** | aAa **156342**

PRODUCTION

MIW 120

Milk	305 kg	Fat	18 kg
Fat %	0.08 %	Protein	24 kg
Protein %	0.18 %		

FITNESS

FIW 104

Longevity	110
Persistency	99
Fertility	98
Somatic cell score (SCS)	104
NRR Daughters	97
Interval calving - 1st AI	102
BV miling speed	115

TYPE

EXT 111

Frame	108	
Rump	91	
Feet & legs	108	
Udder	118	
Rump stature	106	
Body depth	102	
Strength	102	
Back line	106	
Muscling	101	
Rump length	100	
Rump width	101	
Rump angle	89	
Thurl position	90	
Hock quality	103	
Hock angle	104	
Pasterns	96	
Heel height	108	
Fore udder length	99	
Fore udder attachment	121	+
Rear udder width	107	
Rear udder height	114	
Udder depth	113	
Udder balance	114	
Udder cleft	120	+
Teat length	113	
Teat diameter	104	
Teat direction	122	+
Fore teat placement	93	
Rear teat placement	114	

Reference : 04/2024

16/10/2020



^ RULLY

- + A family for % of solids
- + very good balance in production, udder and fitness traits
- + Top bull in the USA

Sire: **ALPSEE** (AMOR)
 Dam: **OKLAHOMA**

MGS: **LOUSTIC** (BIVER)
 MGD: **3845 IRLAN**

MGGs: **ENZO**
 MGGD: **7798**



OKLAHOMA (Dam) ^

ISU 177
 Total Merit Index

INEL 56
 Economical Dairy Index

K-Cn **AB** | B-Cn **A2A2** | aAa **561423**

PRODUCTION TRAITS

Rel. 78

Milk	867 kg	Protein Content	2.2 %
Fat Content	3.3 %	Protein	43 kg
Fat	53 kg		

FUNCTIONAL TRAITS

Udder Health	1.1	Somatic Cells Count	0.9
Clinical Mastitis	1.2	Reproduction	1.1
Fertility Cows	0.8	Fertility Heifers	-0.4
Interval Calving - 1st Ai	2.6	Longevity	1.3
Milking Speed	-0.2	Temperament	0.3
Calving Ease	99	Calving Abilities	105
Vitality Calves At Birth	111		

TYPE TRAITS

Rel. 83

Type	0.9	
Frame	0.7	
Stature	0.7	
Chest Width	0.8	
Body Depth	0.6	
Back Line	0.3	
Dairy Form	0.2	
Body Condition Score	0.0	
Muscularity	-0.2	
Rump	1.8	
Rump Length	0.7	
Rump Width	-0.1	
Rump Angle	1.6	
Thurl Position	1.2	
Feet & Legs	0.7	
Hock Thickness	0.4	
Hock Angle	1.0	
Foot Angle	1.2	
Hoof Depth	1.1	
Udder	0.3	
Udder Depth	0.2	
Udder Cleft	0.0	
Rear Udder Height	0.0	
Rear Udder Width	0.2	
Fore Udder Length	0.8	
Fore Udder Attachment	-0.5	
Udder Balance	0.6	
Front Teat Placement	0.6	
Rear Teat Placement	-0.5	
Teat Direction	-0.3	
Teat Length	-0.2	
Teat Diameter	-0.5	

Thor

FR 3100570303
French Reg. No. A1546

Brown Swiss

12/04/2022



^ THOR

VERY ORIGINAL PEDIGREE

+ Extremely complete

- Sire: **PARADOR** (BAYS)
- Dam: **PACOTILLE**
- MGS: **VISOR** (VIPER)
- MGD: **ILSE**
- MGGs: **SHOTTLE**
- MGGD: **EMMA**



PACOTILLE (Dam) ^

ISU 179

Total Merit Index

INEL 52

Economical Dairy Index

K-Cn **BB** | B-Cn **A2A2** | aAa **243615**

PRODUCTION TRAITS

Rel. 77

Milk	889 kg	Protein Content	1.3 %
Fat Content	1.2 %	Protein	41 kg
Fat	50 kg		

FUNCTIONAL TRAITS

Udder Health	2.2	Somatic Cells Count	2.2
Clinical Mastitis	1.7	Reproduction	0.3
Fertility Cows	0.0	Fertility Heifers	-0.1
Interval Calving - 1st Ai	0.9	Longevity	0.8
Milking Speed	0.3	Temperament	0.7
Calving Ease	99	Calving Abilities	102

TYPE TRAITS

Rel. 79

Type	1.4	
Frame	0.5	
Stature	0.6	
Chest Width	1.1	
Body Depth	-0.1	
Back Line	-0.1	
Dairy Form	0.4	
Body Condition Score	1.4	
Muscularity	0.9	
Rump	0.6	
Rump Length	0.0	
Rump Width	0.4	
Rump Angle	0.4	
Thurl Position	0.4	
Feet & Legs	1.3	
Hock Thickness	-1.0	
Hock Angle	-0.8	
Foot Angle	0.9	
Hoof Depth	1.1	
Udder	1.1	
Udder Depth	1.1	
Udder Cleft	0.5	
Rear Udder Height	0.6	
Rear Udder Width	-0.1	
Fore Udder Length	0.4	
Fore Udder Attachment	0.7	
Udder Balance	1.1	
Front Teat Placement	-0.2	
Rear Teat Placement	-0.3	
Teat Direction	0.3	
Teat Length	-0.4	
Teat Diameter	0.2	

Reference : 04/2024

The sexed doses produced by Sexing Technologies with technology owned by XI, LLO and Inquran LLO must be used only for artificial insemination. XI, LLO and Inquran LLO are trademarks of XI, LLO, LLC. SexedULTRA, SexedULTRA 4M, Sexing Technologies and ST Genetics logos/brands, are trademarks of Inquran, LLC.

Osbourne

FR 1218023961
French Reg. No. 94447
NAAB 180BS94447

Brown Swiss

10/04/2018



^ RECREATI66 (Daughter)

TOP PROVEN

- + Complete fitness package
- + Very good production potential
- + Very functional udder

Sire: **FACT** (ANIBAL)
Dam: **LANCELOT**
MGS: **POM IPIANO** (VAPIANO)
MGD: **EXCALIBUR**
MGGS: **BRILLANT**
MGGD: **ANASTASIA**



ISU 182
Total Merit Index

INEL 59
Economical Dairy Index

K-Cn **AB** | B-Cn **A2A2** | aAa **165243**

PRODUCTION TRAITS

193 Daughters / 112 Herds / Rel. 95

Milk	1024 kg	Protein Content	2.3 %
Fat Content	0.5 %	Protein	49 kg
Fat	44 kg		

FUNCTIONAL TRAITS

Udder Health	0.9	Somatic Cells Count	0.8
Clinical Mastitis	0.9	Reproduction	0.6
Fertility Cows	0.0	Fertility Heifers	-0.1
Interval Calving - 1st Ai	1.7	Longevity	1.6
Milking Speed	0.0	Temperament	0.3
Calving Ease	100	Calving Abilities	111
Vitality Calves At Birth	113		

TYPE TRAITS

71 Daughters / 44 Herds / Rel. 93

Type	1.4	
Frame	0.8	
Stature	0.6	
Chest Width	1.4	
Body Depth	0.8	
Back Line	-0.4	
Dairy Form	0.6	
Body Condition Score	0.4	
Muscularity	0.4	
Rump	1.1	
Rump Length	1.1	
Rump Width	0.7	
Rump Angle	0.3	
Thurl Position	0.6	
Feet & Legs	0.7	
Hock Thickness	-0.5	
Hock Angle	-0.2	
Foot Angle	0.4	
Hoof Depth	0.9	
Udder	1.3	
Udder Depth	1.1	
Udder Cleft	0.1	
Rear Udder Height	0.0	
Rear Udder Width	-0.2	
Fore Udder Length	0.7	
Fore Udder Attachment	2.2	+
Udder Balance	0.4	
Front Teat Placement	1.0	
Rear Teat Placement	1.0	
Teat Direction	0.3	
Teat Length	0.7	
Teat Diameter	1.0	

Reference : 04/2024

Ridley

LU 118070159
French Reg. No. 97747

Brown Swiss

09/07/2020



^ RIDLEY

- + The ultimate grazing profile
- + High % of solids
- + Complete functions

Sire: **O MALLEY** (BENDER)
Dam: **NOUGATINE**

MGS: **VANPARI** (VASIR)
MGD: **NICKI**

MGGS: **PAYSSLI**
MGGD: **DE000814366876**



NOUGATINE (Dam) ^

ISU 166
Total Merit Index

INEL 51
Economical Dairy Index

K-Cn **BB** | B-Cn **A1A2** | aAa **564123**

PRODUCTION TRAITS

Rel. 79

Milk	444 kg	Protein Content	3.0 %
Fat Content	5.4 %	Protein	35 kg
Fat	56 kg		

FUNCTIONAL TRAITS

Udder Health	0.6	Somatic Cells Count	0.2
Clinical Mastitis	1.1	Reproduction	1.0
Fertility Cows	0.9	Fertility Heifers	0.0
Interval Calving - 1st Ai	1.3	Longevity	0.4
Milking Speed	0.3	Temperament	-0.2
Calving Ease	110	Calving Abilities	123
Vitality Calves At Birth	100		

TYPE TRAITS

Rel. 81

Type	0.8	
Frame	-0.2	
Stature	-0.6	
Chest Width	0.1	
Body Depth	-0.4	
Back Line	0.2	
Dairy Form	0.1	
Body Condition Score	0.4	
Muscularity	0.1	
Rump	-0.1	
Rump Length	-0.2	
Rump Width	-1.7	
Rump Angle	0.3	
Thurl Position	0.9	
Feet & Legs	1.3	
Hock Thickness	0.4	
Hock Angle	-0.7	
Foot Angle	0.5	
Hoof Depth	0.7	
Udder	0.8	
Udder Depth	0.4	
Udder Cleft	-0.3	
Rear Udder Height	0.8	
Rear Udder Width	1.0	
Fore Udder Length	0.9	
Fore Udder Attachment	0.8	
Udder Balance	0.7	
Front Teat Placement	-0.2	
Rear Teat Placement	-0.7	
Teat Direction	-0.5	
Teat Length	-1.0	
Teat Diameter	0.4	

Reference : 04/2024

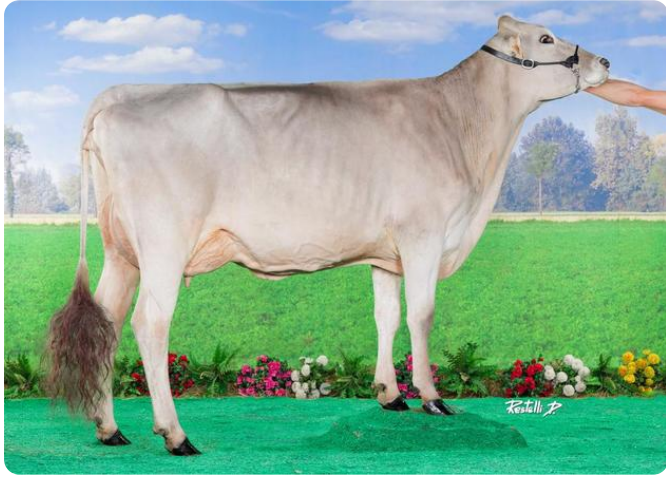
O Malley

FR 4427424483
French Reg. No. 94448
NAAB 180BS94448

Brown Swiss

12/03/2018

GAEC DE LA VINCAIS - GRANDCHAMPS DES FONTAINES (44)



ROSE (Daughter)

TOP RPOVEN WORDLWIDE

- + The must-have
- + % solids , milk and function
- + superb type

- Sire: **BENDER** (BIVER)
- Dam: **LILIPUS**
- MGS: **GLARUS** (GLENN)
- MGD: **HAWAIENNE**
- MGGS: **DALLY**
- MGGD: **ALTESSE**



KENAYA (Daughter)

PPR 146

Progressive Performance Ranking

NM\$ 403

Net Merit (\$)

K-Cn **BB** | B-Cn **A2A2** | aAa **423561**

2078 Dtrs / 1140 Herds / 90% Rel. / 3% US Dtrs

PRODUCTION

Milk	465 lbs
Fat	38 lbs
% Fat	0.08 %
Protein	42 lbs
% Protein	0.11 %
Net Merit (\$)	403
Fluid Merit (\$)	278
Cheese Merit (\$)	415
Grazing Merit (\$)	373

HEALTH AND REPRODUCTION

Gestation Length	1
Somatic Cell Score	3.19
Productive Life	2.3
Daughter Calving Ease	2.6 %
Sire Calving Ease	2.3 %
Daughter Pregnancy Rate	0.5
Heifer Conception Rate	1.3
Cow Conception Rate	-0.2
Livability	2.1
EFI	7.1 %
gEFI	7.1 %

TYPE TRAITS

2078 Dtrs / 1140 Herds / 90% Rel.

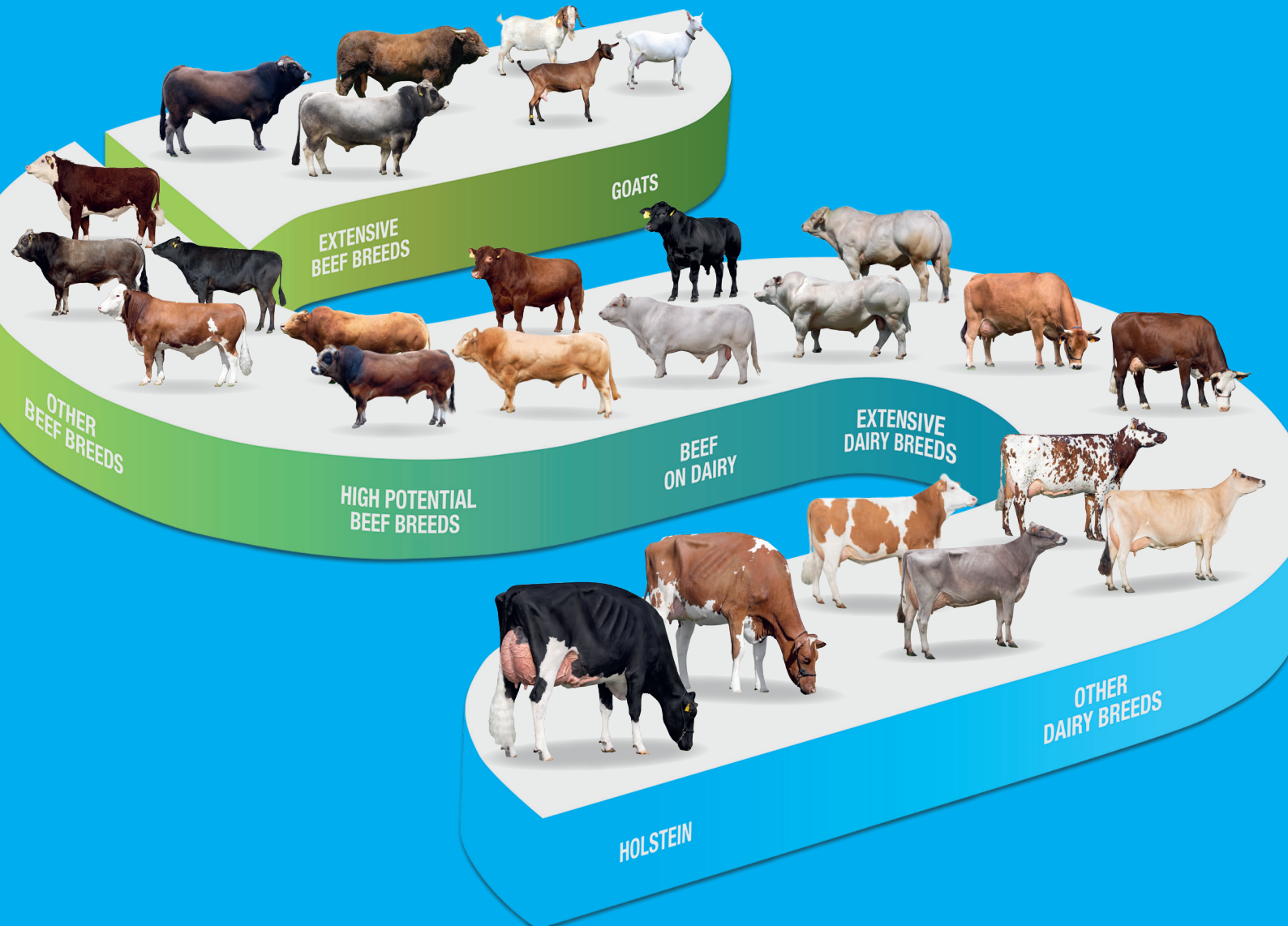
PTAT Total Conformation Index	0.5
Udder Composite	0.76
Mobility	0.1
Foot & Leg Composite	1.4
Stature	1.8
Strength	0.9
Body Depth	0.2
Dairy Form	-0.5
Rump Angle	2.5
Thurl Width	0.0
Rear Legs - Side View	-0.3
Rear Legs - Rear View	0.0
Foot Angle	1.1
Fore Udder Attachment	1.4
Rear Udder Height	0.6
Rear Udder Width	0.2
Udder Cleft	0.5
Udder Depth	1.0
Fore Teat Placement	0.5
Teat Length	-0.9

Reference : 04/2024

The sexual doses produced by Sexing Technologies with technology owned by XI, LLO and Inquran LLO must be used only for artificial insemination. YX@ is a trademark of XI, LLO, LLC. SexedUltra, SexedUltra 4M, Sexing Technologies and S1 Genetics logos/brands, are trademarks of Inquran, LLC.

SYNETICS

Our unique genetic offer



Our wide genetic offer with more than 20 dairy and beef breeds as well as 3 breeds of goats is unique in Europe.

It includes bulls from the SYNETICS breeding programs as well as from our partners and covers the demands for dairy, pure beef and crossbreeding bulls.

With the help of our wide genetic offer we want to support you in achieving your business goals and to farm sustainably, while enjoying both work and life.

Join us on  
www.synetics.world


SYNETICS

Join us on



LET'S GET IN TOUCH



www.synetics.world